



HodgeClemco

A SURFACEPREP COMPANY



Product Catalogue



Hodge Clemco was founded in 1959 and has been a front runner in the UK blasting scene ever since.

Hodge Clemco is based in Sheffield with two sites in Handsworth and Dinnington.

We have a strong product portfolio ranging from portable abrasive blasting equipment, wet blast units, hand blast cabinets, soda, blast equipment, sponge blast, blast rooms, a full range of abrasives, paint spray equipment and safety equipment.

We manufacture a vast range of abrasives to compliment our equipment range.

Contents

Standard Blast Machines	3-5
Specialist Machines	
Slurry/Wet Blast Equipment	6
IBIX Ultra-Portable Blasting	7
Closed Circuit Blasting	8
Portable Suction Blasting	8
Other Specialist Machines	9
Spares	
Abrasive Metering Valves	10
Remote Control Valves	11
Ancillary Items	12
Nozzles and Blast Hose	
Nozzles	13
Nozzle Selection Guide	14
Hose and Couplings	15-16
Safety Equipment	
Personal Protective Equipment	17-19
Blast Suits	20
Abrasives and Media Recycling	21- 22
Cabinets	23
Blast Rooms	24
Internal Pipe Cleaning	25
Paint Spray Equipment	26
Training and Servicing	27
Brochures	28
Online	29

Standard Blast Machines



Hodge Clemco blast machines are the most technically advanced blast machines available, offering unrivalled performance, low running costs and extended life cycles. Our contractor range has become the industry standard in performance, mobility, safety and quality of construction. In particular these high performance machines include many unique features:

- Roll bar handles protecting operator and valve work
- Low centre of gravity for easy movement
- Large bore pipework for efficient airflow
- Large access plate for easy maintenance
- Unique pop up valve allows operation at very low pressures when used in conjunction with a factory fitted pressure regulator.

Expendable Abrasive Capacity of Machines			
Model	Overall Dimensions H x W x D (mm)	Abrasive Capacity	
		Kgs	m ³
1028NC	780 x 400 x 800	25	0.015
1440NC	1070 x 670 x 800	75	0.041
2040NC	1100 x 810 x 960	150	0.089
2452NC	1320 x 850 x 960	300	0.163

1 cu.ft. = 0.028 m ³	1 cu.ft. = 28.32 ltrs
1 ltr = 0.035 cu.ft.	1 m ³ = 35.31 cu.ft.

Bulk Density of Abrasive (approx)			
Media	Kg/ltr	lbs/cu.ft	Tonnes/m ³
Metallic	3.78	240	3.78
JBlast	1.80	114	1.80
Stone Grit	1.45	91	1.45
SC	1.35	86	1.35
Alublast	2.00	106	2.00
Glass Bead	1.44	90	1.44



The **1028NC blast machine** is the smallest model in our range. It has an expendable abrasive capacity of 25kg with overall dimensions of 780mm high x 400mm x 800mm; approximate weight 40kg. This machine is suited for small projects and jobs where portability is the key factor.

The **1440NC blast machine** is one of our most popular models. It has an expendable abrasive capacity of 75kg with overall dimensions of 1070mm high x 670mm x 800mm; approximate weight 100kg. This machine offers three times the capacity of the 1028NC machine, allowing it to be used on medium sized projects. The design of this unit allows the machine to be moved through standard doorways and is a very popular choice on stone renovation projects and boat yards.

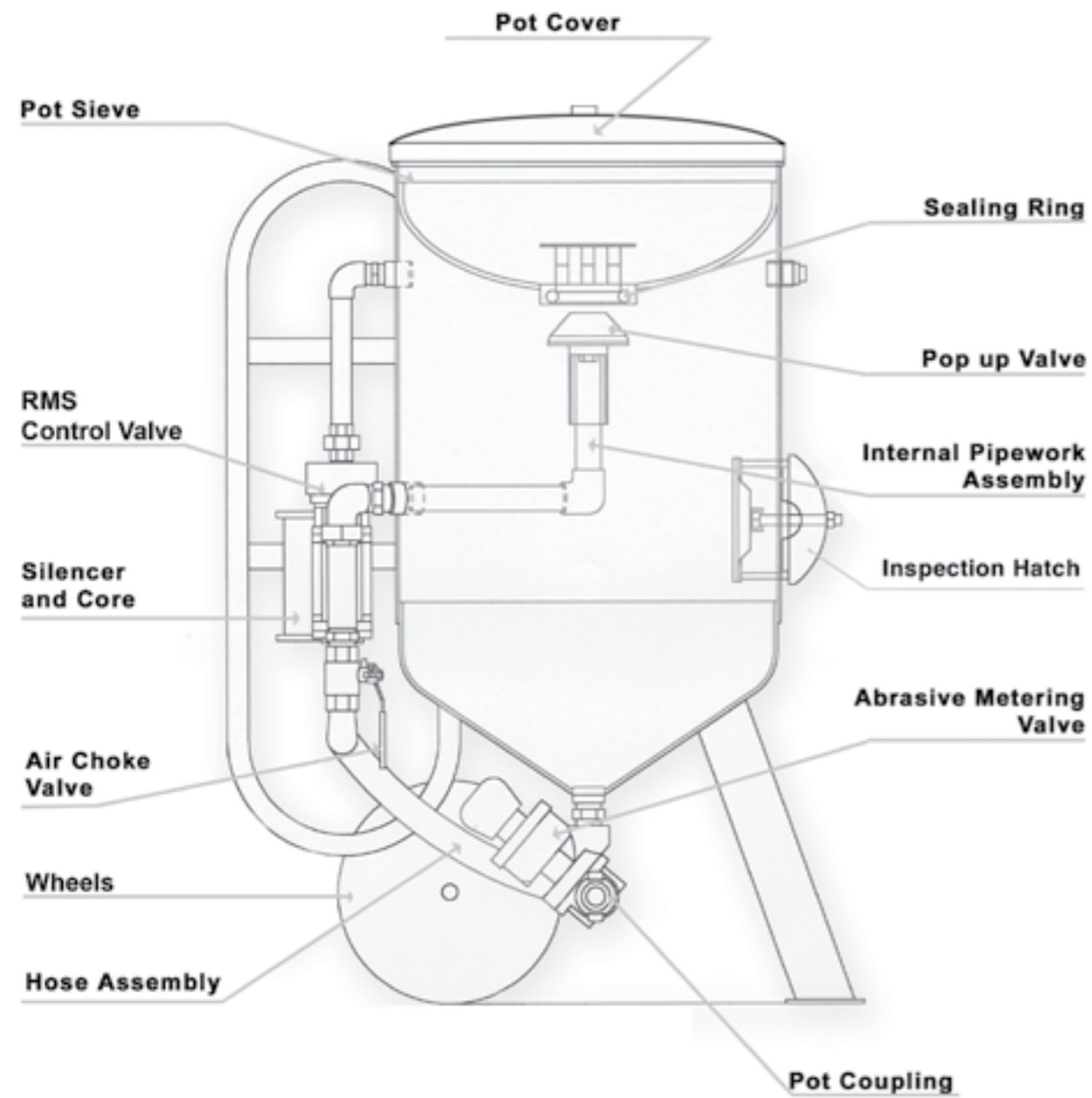


The **2040NC blast machine** is an ideal machine on heavy duty industrial applications where portability is still an important consideration. It has an expendable abrasive capacity of 150kg with overall dimensions of 1100mm high x 810mm x 960mm; approximate weight 140kg. This machine offers twice the capacity of the 1440NC machine, allowing its use on medium to larger projects. This type of unit is commonly used on bridge refurbishment work, general fabrication cleaning and larger shipyards.



The **2452NC blast machine** is the largest model in our standard range. It has an expendable abrasive capacity of 300kg with overall dimensions of 1320mm high x 850mm x 960mm; approximate weight 180kg. This machine offers twice the capacity of the 2040NC machine, making its use ideal on larger projects. Whilst this unit is readily portable it is commonly used on fixed blast room installations and other jobs where mobility is less important.





Aquagrit (Wet & Dry Blast)

The robust Aquagrit dry and slurry blast units are ideal for heavy industrial cleaning applications and typical uses include but are not limited to: cleaning of ship hulls, tank internals, offshore maintenance and general steel fabrication. All Hodge Clemco Aquagrit machines combine the best of both wet and dry blast machines in one convenient solution. When loaded with dry abrasive they operate as any standard Hodge Clemco blast machine. When operated as a slurry blast machine the media is totally saturated in water within the system, fully dampening any airborne fines and dust during the blasting process. The ratio of abrasive to water is approximately 1:1. Recommended abrasives range from 0.2mm particulate size upwards. All Aquagrit units are manufactured to the Hodge Clemco contractor machine standards and accept Clemco spares. The range includes three vessel sizes: 1040, 1448 and 2050. Grit capacity is the only difference between the machines.



Wet Blast Accessories



Win Nozzle
Water injection nozzles to be used in conjunction with the Husky Pump. A selection of nozzles are available.



Husky Pump
Air driven pump converts any dry blast machine to wet blast when used in conjunction with a Win Nozzle.



WB1 Wet Blast Head
The adapter is simply attached to the nozzle to allow water to surround the blast stream. Requires mains water pressure feed.

IBIX® Ultra-Portable Blast Machines

The IBIX® range of ultra portable blast machines are designed with portability in mind. Unlike conventional blast pots there is a unique pistol style gun and nozzle arrangement which doubles as a deadman system for safety reasons.

IBIX® Ibimar

The IBIX® Ibimar is a user-friendly ultra-portable blast machine designed to use fine media for delicate work providing surface quality grades from Sa 2½ to Sa 3. Equipped with wheels and a carry handle, lightweight and low maintenance, with a low air consumption, the Ibimar can be transported & manoeuvred with ease and can easily be taken into confined areas making it ideal for marine and offshore industries.

The high grade aluminium construction makes the unit very light and at the same time robust. Wheels are fitted to allow the unit to be towed in a trolley form but, with a harness, the IB9 and IB13 can also be worn like a back-pack. Three machine sizes are available to suit most budgets and application requirements. Unlike conventional blast machines these IBIX® units have a unique pistol-style gun and nozzle arrangement which doubles as a dead-man safety system.

The Ibimar is user friendly - It is easy to fill the tank with abrasive via the filler funnel, and it is easy to adjust the media to air ratio with a control screw. The Ibimar is a versatile, multi-purpose blast machine with a wide range of applications.



IBIX® Special

The IBIX® Special cleaning system has been developed for delicate surface cleaning and relatively small blasting work where conventional blasting equipment is too cumbersome or aggressive. Made entirely of aluminium, handy and easily transported, the IBIX® Special cleaning system is extremely versatile and available in two sizes. Both can be used with ease by just one operator and are available in either a dry, or a combined wet and dry option.

- Applications: Decorative elements; wood; porous stones; brickwork; marble; glass; cement; friezes; mouldings; recesses; artistic artefacts; depainting metal & boats; compound materials; etc.
- The operating (compressed, cooled and dehumidified) air pressure is adjustable starting from 0.2 bar.
- Controlled low pressure blasting of specific calcium carbonate based medias of extremely fine grain size (210 - 350 mesh) and hardness less than 3 Mohs, spherical almandine garnet (7.5 Mohs), vegetal blasting materials, or with sodium bicarbonate for non-porous, scratch-able, and glossy surfaces.
- Fine adjustment of the compressed air/aggregate/vaporised water mixture.
- Light, ergonomic application gun with interchangeable hard metal nozzles and internal aperture of diameters from 1 to 4.5mm (cylindrical or conical).



Closed Circuit Blasting Equipment

Eductomatic

The Eductomatic is a portable closed circuit suction unit. It provides effective containment of dust and abrasive. A range of heads are available to provide a seal against most surfaces. A 360° swivel blast head enables cleaning at all angles and with a total weight of 3 kg it is light and manoeuvrable. Air volumes of 33-60 cfm at 90 psi, are required to power the unit. A recyclable abrasive is normally used which is cleaned by the unit, with all dust contained in an attached dust bag or, for production use, in a separate dust collector. With easy filling and a blast pattern of approximately 32mm diameter the Eductomatic is a clean and simple unit to operate, ideal for those difficult areas.



Eductoblast

Combining Hodge Clemco's standard portable blast cleaning equipment and abrasive recovery system creates an efficient closed circuit blast system - The Eductoblast is an air powered unit and is ideally suited for use with metallic abrasives. For other commonly used abrasives the addition of a spent material collection hopper is recommended. This collection hopper is particularly useful for safe disposal of lead based coatings. There are two models in the range, the EDB 60 and the EDB 75.



Portable Suction Blasting Equipment

SG300 Suction Gun

Essential for light duty blast cleaning when available air volumes are low. With a range of air jet and nozzle combinations to meet constraints of available compressed air, the SG300 will provide an easy answer to the infrequent blaster. Ideal for the smaller job where the abrasive hopper can be placed within 10ft (3m) of the surface to be cleaned. Nozzles used are tungsten carbide lined for a long life.



SG400 Power Injection Gun

Designed for use without a pressure vessel, the unit lifts abrasive directly from the bag. With cleaning rates close to that of the 1028NC contractor machine this is a welcome addition to the operators equipment. Also available as a wet blast model SG400W keeping dust down to a minimum by injecting water into the blast stream.



Note - A greater volume of air is required than normally used with the 1028NC for this unit to work at its optimum capacity.

EnviraSponge System

EnviraSponge has been specially developed to provide a low-dust environment, with clear visibility and reducing the need for dust suppression and on-site dust extraction. EnviraSponge media captures the dust at the source of generation. It is recyclable and minimises waste generated during surface cleaning. The main benefits are:

- A low-dust environment
- Containment of waste at the source
- Reduced need for dust suppression & extraction
- Greater dwell time for measured abrasive efficiency
- Enhanced surface cleaning and chloride removal from steel
- Confined spaces can be cleaned without affecting sensitive equipment



1448NC Soft Clean Multimedia Machine

Specifically developed to meet the needs of the stone cleaning industry where delicate control is required. The system is designed to use the complete range of micro abrasives including: Stonegrit Extrafine, other fine Aluminium Silicates, Calcium carbonate, glass bead, grit and speciality medias such as Bi-carbonate of Soda. Built to the same high specification as the contractor machines the unit has many features to facilitate the needs of the stone cleaning industry.

- Operating pressures of under 0.5 bar can be achieved
- The system is able to utilise all commonly available nozzles from 2mm to 12.5mm diameter.
- The unit operates wet or dry (when the wash down facility is incorporated).
- Water consumption is approximately 4 ltr/min. Mains water supply is not required.



Can Crusher

The unit compacts containers such as paint tins to a fraction of their original height in a few seconds, thereby helping to reduce skip and handling costs. A 380mm can is typically compacted by approximately 80% to 75mm. The machine accepts cans up to 25ltr capacity (max 500mm high).



Abrasive Metering Valves

A comprehensive range of abrasive metering valves to suit a wide variety of medias. They can be fitted to any standard portable blast machine.



IND11096 'MAJOR' VALVE

A robust abrasive metering valve with tungsten carbide sleeve for long life. Accurate abrasive flow can be achieved with the fine thread control. Ideal for all abrasives. Suitable for use with the 1440NC, 2040NC and 2452NC portable blast machines.



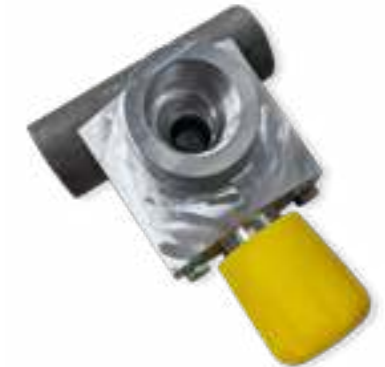
RCAMV (C/W Pilot Valve)

A remote version of our popular P17C with replaceable wear-resistant liners.



P17C STEEL GRIT VALVE

Recommended for aggressive metallic abrasives i.e. chilled iron, steel and aluminium oxide. Wide range of flow rates available. Replaceable liner for long valve life. (SGV3 & SGV3R)



MPC240 'MINOR VALVE'

A smaller version of the 'Major' valve, with urethane liner. Suitable for use with the 1028NC portable blast machines.



P7 EXPENDABLE ABRASIVE VALVE

Manufactured from high quality non-corrosive alloy, recommended for use with non-metallic abrasives. Precise abrasive flow can be easily maintained by use of the handle and quadrant arrangement.



RCAMV2 TEE PIECE & FLANGE

Required for connection of P17C



SGV3 & SGV3R

High wear resistant rubber liner supplied with P17C and RCAMV remote control abrasive metering valves. v

Remote Control Valves



RMS120 Silencer Core
Replacement filter material for the RMS110 Silencer, which reduces exhaust noise on de-pressurisation.

RMS100D Remote Control Valve

The popular Hodge Clemco RMS100 with 1 1/4" port is fitted to all blast machines as standard. This valve allows the machine to be depressurised from a remote deadman handle fitted at the blasting nozzle position.



RCAMV6 Deadman Handle
Specifically for use with pneumatic abrasive metering valves. The RM88 slide valve kit enables the operator to switch abrasive on and off at the nozzle for blow-down or wash-down purposes.

Airlines

Colour coded 1/4" (6mm) air lines are essential components for the operation of safe blasting systems. They provide easy identification of lines carrying air for deadman operation, abrasive control, breathing air etc.

HOSE7C	10m BLUE	HOSE7D	20m BLUE
HOSE7CR	10m RED	HOSE7DR	20m RED
HOSE7CY	10m YELLOW	HOSE7DY	20m YELLOW
HOSE7S10	10m Breathing hose	HOSE7S20	20m Breathing hose



A16



RMS2000E Remote Control Valve
This remote control valve is fitted with 1 1/2" ports. The action of this valve allows the machine to be depressurised from a remote deadman handle fitted at the blasting nozzle. This eliminates accidents and reduces wastage.



RM22 Rubber Button
Fits all deadman handles



RM21A Deadman Handle
The 'blasters favourite', widely used throughout the industry this safety trigger is recognised as the best for site blasting conditions (supplied as RCAMV6 for remote control abrasive valve)



A17



RM28RK Repair Kit
Repair kit for RMS100 remote control valve. Kit contains all seals required to maintain remote control valve efficiency.



RMS2000RK Repair Kit
Repair kit for RMS2000 remote control valve. Kit contains all seals required to maintain remote control valve efficiency.



RM2000 Deadman Handle
For use with remote control abrasive metering valve. This handle does not bleed air when in standby.



A18

Ancillary Items



P2 & P2A Pop Up Valve
Automatic pressure sealing pop-up valve with internal sleeve for all pre-contractor style blast machines.



PNC22 Pop Up Valve
Automatic pressure sealing pop up valve with external sleeve. Common size for all contractor machines.



CMP2 Pop Up Valve
Automatic pressure sealing pop-up valve with internal sleeve for 1028 blast machines.



HC6472 Pop Up Valve
Automatic pressure sealing pop-up valve with internal sleeve for IND1446 cabinet system blast machines.



P23X Water Separator
Suitable for machines with 1 1/2" pipe work.



Comparators (Grit and Shot)
Visual/tactile guide to surface roughness (ISO 7079). Four segments having differing degrees of etch.



Pot Cover and/or Sieve
Prevents ingress of oversized particles into the machine. The loose pot cover prevents ingress in adverse weather conditions. (When ordering please state model number of machine e.g. 1028NC, 1440NC, 2040NC, 2452NC).



MP148X Water Separator
Suitable for machines with 1/2" pipe work.



R119G12C Pressure Regulator
Diaphragm type pressure regulator, suitable for machines with 1 1/2" pipe work.



CAPS9
Back ported pressure gauge.

Nozzles

Hodge Clemco manufactures a comprehensive range of blast nozzles. These include parallel bore, venturi, double venturi, side outlet and water injection nozzles. We have a nozzle to suit every application. Our nozzle designs come in a range of material types. As a general rule the harder the abrasive, the harder the material type used in the blast nozzle.

Our lowest cost boron alloy nozzles are designed with budget and performance in mind and require the use of an LR1 nozzle retainer which clamps the nozzles in position. Our tungsten carbide nozzles are ideally suited for chilled iron abrasive applications with boron carbide being offered on hard abrasive applications such as aluminium oxide. A hard material nozzle offers extended life and cost savings on most applications.



SMS/SXR

Available in a range of bore sizes, our **Clemlite nozzles** are manufactured in a venturi profile, offering increased production rates. The silicon carbide liner is securely protected in an alloy and polyurethane jacket. Silicon carbide nozzles are suitable for use with chilled iron & aluminium oxide abrasives.



CT

Available in a range of bore sizes, our **tungsten nozzles** are manufactured in a venturi profile, offering increased production rates. The tungsten carbide liner is securely protected in an alloy jacket. Tungsten nozzles are suitable for use with chilled iron abrasives.



SY

Available in a range of bore sizes, our **Syclone nozzles** are manufactured in a venturi profile, offering increased production rates. The xylon liner is securely protected in a polyurethane jacket. Syclone nozzles are suitable for budget users and are aimed for use with aluminium oxide.



CBSD

Available in a range of bore sizes, our **boron alloy nozzles** are low cost and require an LR1 nozzle adapter to clamp the nozzle into the nozzle holder. Suitable for our range of expendable abrasives such as Jblast and stonegrit.



CAM

Side-outlet nozzles. Available in a range of bore sizes and outlet configurations. The nozzles are manufactured in 1, 2 or 3 outlet configurations. The tungsten carbide liner is securely protected in an alloy jacket. Tungsten nozzles are suitable for use with chilled iron abrasives.



CSD

Available in a range of bore sizes. Our **boron carbide nozzles** are manufactured in a venturi profile, offering increased production rates. The boron carbide liner is securely protected in an alloy jacket. Boron nozzles are suitable for use with chilled iron & aluminium oxide abrasives. This nozzle offers optimum life cycle.



LR1

Nozzles

Nozzle Selection Chart

Venturi Nozzles in ascending order of hardness

Bore Size	1/8" (3mm)	3/16" (5mm)	1/4" (6.5mm)	5/16" (8mm)	3/8" (9.5mm)	7/16" (11mm)	1/2" (12.5mm)	Thread Type
Length	(45mm)	102mm	(130mm)	(140mm)	(165mm)	(197mm)	(222mm)	
Boron Alloy				CBSD5	CBSD6	CBSD7	CBSD8	Flanged
Boron Alloy (Side outlet)				CBSD51				Flanged
Tungsten Carbide		CTSD 350	CTSD 450	CTSDX 550	CTSDX 650	CTSDX 750	CTSDX 850	50mm
Silicon Carbide		SMR3	SMS4	SMS5	SXS6	SXS7	SXS8	50mm
Syclone (SY)			SY32450	SY32550	SY32650	SY32750	SY32850	50mm
Boron Carbide		CSD3B	CSD4B	CSD5B	CSDX6B	CSDX7B	CSDX8B	50mm

Straight Bore Nozzles in ascending order of hardness

Length		(76mm)	(76mm)	(76mm)	(76mm)	(76mm)	(76mm)	
Tungsten Carbide		CTJD350	CTJD450	CTJD550	CTJD650	CTJD750	CTJD850	50mm
Tungsten Carbide (Side Outlet)		CAM *3350	CAM *4250	CAM *5150 /5250	CAM *6150 /6250			50mm
Length		(43mm)	(43mm)	(43mm)	(43mm)		(43mm)	
Tungsten Carbide	CT2L	CT3L	CT4L	CT5L	CT6L		CT8L	25mm
Boron Carbide	CB2L	CB3L	CB4L	CB5L	CB6L		CB8L	25mm

*Second digit refers to number of outlets e.g. 4250 is 2 no. x 1/4" (6.5mm)

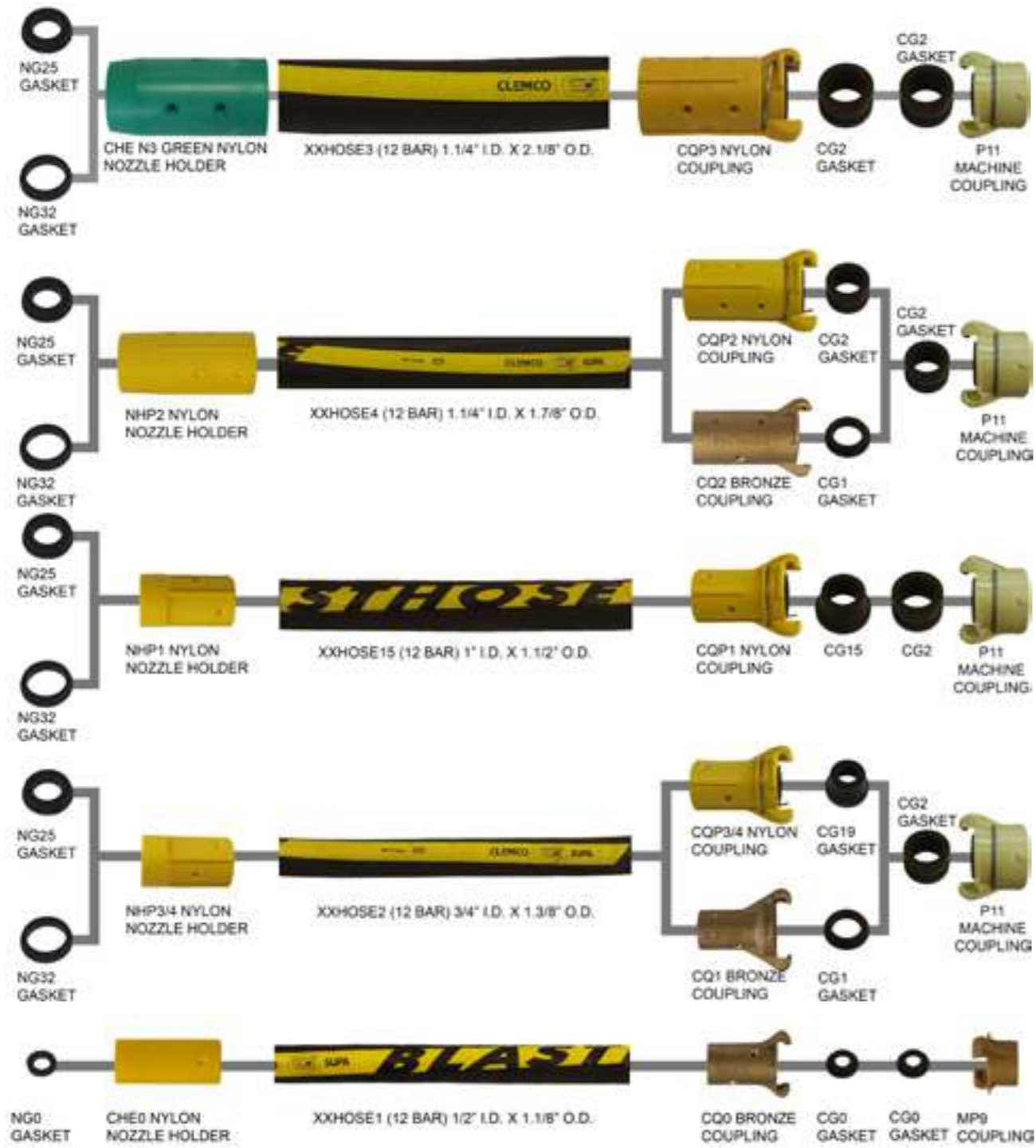
Air Consumption Table (cfm) Nozzle Pressure

bar	0.3	0.7	1.0	1.4	1.7	2.0	2.4	2.8	3.0	3.4	3.8	4.0	4.8	5.5	6.2	7.0	
psi	5	10	15	20	25	30	35	40	45	50	55	60	70	80	90	100	
1/8" (3mm)						8		10		11		13	15	17	18	20	A
										0.31		0.37	0.43	0.48	0.51	0.57	B
3/16" (5mm)						18		22		26		30	33	38	41	45	A
										0.73		0.84	0.92	1.06	1.15	1.26	B
1/4" (6.5mm)	18	21	25	28	31	34	38	41	44	47	51	54	61	68	74	81	A
										1.31		1.51	1.71	1.90	2.08	2.27	B
5/16" (8mm)	23	29	35	41	47	53	59	65	71	77	83	89	101	113	126	137	A
										2.16		2.50	2.83	3.16	3.53	3.84	B
3/8" (9.5mm)	32	40	49	57	66	74	83	91	100	108	117	126	143	161	173	196	A
										3.02		3.53	4.00	4.50	4.85	5.50	B
7/16" (11mm)	50	61	72	83	94	105	116	124	138	147	159	170	194	217	240	254	A
										4.12		4.76	5.44	6.09	6.73	7.11	B
1/2" (12.5mm)	68	82	96	110	124	137	152	165	181	195	210	224	252	280	309	338	A
										5.46		6.28	7.06	7.85	8.65	9.46	B

A = Discharge of air carrying abrasive in cfm

B = m³ per min

Blast Hose and Couplings



Also available couplings in bronze and cast iron.



P9
Bronze Coupling



P10
Cast Iron

Compressors Hose and Couplings

Hose 6

1 1/2" NB 2/1/4" OD
1 1/2" Male coupling on each end
Swaged ends



Hose 5

3/4" ID 1 1/8" OD
Claw couplings on each end
Ludecke couplings



Hose 8

1/2" ID 13/16" OD
Claw couplings on each end
Ludecke couplings



Hose 16

1" ID 1 15/32" OD
Claw couplings on each end
Ludecke couplings



Personal Protective Equipment

Personal Protective Equipment (PPE)

Is the most important equipment in any blasting environment. It will keep you safe and secure during any hazardous process.

Everyones requirements are different. Therefore, we offer a comprehensive range of PPE.



Apollo 600 CE Spares

APH60002 Outer Lens

APH60001 Intermediate Lens

APH60000 Inner Safety Lens

APH23815D Cape

APH24012D Window Frame

APH23819D Window Gasket

APH238061I Helmet Suspension

APH23801D Cape Attachment Band



CPF0004A



CPF0007L



Disposable Hood

For additional protection when blasting or spray painting. The paper hood is hygienic and essential when a helmet is being worn.

PDH1

Cool Vest

The Cool Vest is a lightweight, one-size-fits-most personal protective garment for warming or cooling workers exposed to stressful hot and cold environments indoors or out.



24854

Apollo 600 CE

The Apollo 600 helmet provides unrivalled protection and comfort during blast cleaning.

The helmet has a visual indicator for low air flow and a user friendly head strap adjustment mechanism. The heavy duty latch system and peaked rim ensure that the lenses are held firmly in place for protection.

The cape is securely attached to the helmet using a ratchet and clamp mechanism allowing the cape to be removed, laundered and refitted.

All new air fed blasting helmets are required by law to be CE marked as complex items under BS EN 14594;2005.



Ear Defenders

The low profile ear defenders can fit below the Apollo range of blast helmets.

Should additional protection be required they can be worn with ear plugs.

ED1



Communication Sets

Communication sets are available in both wired or wireless versions.

They have either push to talk or voice activated microphones.

The headsets can link multiple operators to a single supervisor station creating a safer working environment for operatives.



The cartridge can be fitted to the BAF10, CPF20 and CPF40 range of breathing air filters.

It is recommended that the filter cartridge is replaced at regular intervals to ensure the health and safety of the operator.

CPF03547



Designed to reduce pollutants in breathing air supplied to air fed helmets.

The filter will remove mists (including oil mist), water vapour and particles down to 0.5 microns in size, from a suitable supply of compressed air that is free from carbon monoxide in accordance with BS EN ISO 12021.

CPF20



The climate control tube connects to the breathing air supply of the Apollo helmet.

The unit supplies the operator with warm or cool air.

Temperature range is between 10°C to 30°C, providing more efficient working conditions.

APH4411

The DLX Kit

The DLX comfort fit suspension comes in two sizes. It fits around the operators head with comfortable padding.

The adjustable web suspension fits head sizes 6.5 inches to 8 inches.

The adjustable chin strap holds the helmet in position on the operators head.

APH25189



The air quality test kit can be used to monitor the purity of breathing air in low pressure range.

The kit comes with Dräger-Tubes®, tube opener, measuring device for tubes, timer, quick connect coupling, pressure reducer, carrying case and instruction booklet.

A certificate of conformance and accuracy, and six month limited warranty from the date of original purchase is provided.

The plug connection can be easily connected to the low pressure air supply system to be monitored.

By simultaneously measuring for carbon monoxide, carbon dioxide, water content and oil testing can be completed in 5 minutes.

Optionally, the values can be measured individually or simultaneously.

BAK6527150





The **RPB Nova 3** is a comfortable blasting respirator. It has been designed with the operator at the forefront, with consideration for their productivity and safety.

The helmet features great visibility with its unique cassette lens system. It gives the wearer an optically clearer view at all times. It has 30% more downward vision than other respirators due to its high level operating window.

The helmet is customisable to the operator with its ratchet padding system and also has side pads that absorb noise. The helmets design evenly distributes weight across the wearers head and shoulders, making it more comfortable.

All parts are replaceable and the padding is machine washable so minimises the operators downtime.

The **Apollo 100** air fed blasting helmet is a budget choice helmet offering competitively priced safety and reliability. The viewing window is fitted with replaceable outer lenses and the inner support cap is designed for comfort, essential when wearing the helmet for long periods of time. The helmet is approved by the HSE. All new air fed blasting helmets are required by law to be CE marked as complex items under BS EN 14594.



Tripod Emergency Stop

Our emergency stop device consists of a pneumatic EM button, tripod mounted, and fitted at any location along the deadman handle line. This unit is supplied with all the fittings to allow the unit to be retro fitted to any deadman enabled handle system. Our unit allows for the intervention of other users to switch off the blast machine in the event of an accident.



Wolf M-85 Light

The tightly focussed white beam of the Wolf M-85 cuts through dust and spray, improving visibility and resulting in more precise blasting and a higher quality surface finish. Securely attached to the nozzle or hose and protected against accidental bounce-back by a robust, recyclable, and replaceable glass lens, the powerful beam is targeted directly on to the surface being worked upon.



AG1N Agmec LED Lamp

Attached to the blast hose behind the nozzle this lamp produces a beam of light wherever the nozzle is pointed. 12V. (Not intrinsically safe for explosive environments).



Blast Suits

Inspection Suit

Where a high level of impact resistance is not required, the inspection suit provides protection from paint mist, dust and dirt. State size when ordering.



Part No.	Size	Chest
APHBS1SV	Small	47"
APHBS1MV	Medium	51"
APHBS1LV	Large	55"
APHBS1XLV	XLarge	60"
APHBS1XXLV	XXLarge	63"
APHBS1XXXLV	XXXLarge	67"
APHBS1XXXXLV	XXXXLarge	70"

Part No.	Size	Chest
FRS	Small	50"
FRM	Medium	52"
FRL	Large	54"
FRXL	XLarge	56"
FRXXL	XXLarge	58"
FRXXXL	XXXLarge	60"
FRXXXXL	XXXXLarge	62"
FRXXXXXL	XXXXXLarge	64"

HSE Bonded Hoses

Bad working practices can result in accidents. Our range of tamper proof hoses have been developed to ensure the correct and proper use of a deadman control system. By bonding the deadman handle and control lines to the blast hose it ensures the deadman handle is operated to provide the safest working environment. The use of tamper proof screws on all couplings ensures that the system operates as designed by Hodge Clemco, which means in the safest way possible.



GLC2 Leather & Cotton Gloves

Heavy duty leather gauntlets with cotton lining give maximum protection from abrasive ricochet.



Flame Retardant Wet Blast Suit

Offering unrivalled performance and protection across a wide range of applications.

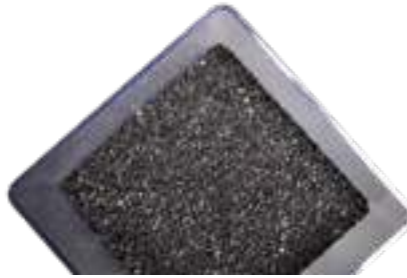
Hodge Clemco has a fully tested and approved flame retardant blast suit, designed in conjunction with Shell and some of the UK's largest fabric maintenance contractors. The result is a suit capable of being used on both wet and dry blast processes in addition to being flame retardant. This allows the suit to be used at petrochemical sites, on and off-shore and applications where the operator works in a zoned environment. Comfort is achieved by using high technology fabrics which allow full mobility and a breathable inner lining to help regulate body temperature. The heavy duty wear resistant fabric is manufactured to military standards and provides optimum wear resistance.

Abrasives



Aluminium Oxide Brown

A high-grade, high purity alumina manufactured from the controlled melting of calcined bauxite, silica, coke and iron.



JBlast

Produced from mineral slags which are the by-product of furnace operations.



Aluminium Oxide White

A high-grade, ultra-pure alumina manufactured calcined alumina.



Stone Grit

A blended material combining both mineral slags and synthetic material to create a specialist abrasive product.



Calcium Silicate

A light-coloured calcium silicate synthetic mineral abrasive produced from the by-product of furnace operations.



Chilled Iron

A recast fused iron abrasive media in angular form. This is a tough and aggressive metal abrasive.



Garnet

A naturally occurring mineral arranged in the almanfine form.



Glass Bead

A high grade soda lime glass bead.



Aluminium Oxide Pink

Manufactured from calcined alumina with a small addition of chrome.



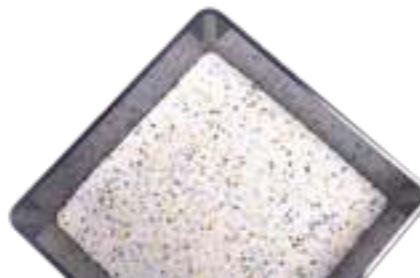
Stainless Steel Shot

A chrome-nickel stainless steel shot with an austenitic microstructure.



Steel Grit

An angular steel abrasive media produced by crushing high-grade steel shot.



Avialite II & III

Urea amino plastic blast media manufactured from prime cured mouldings.

Media Reprocessing and Disposal



As a licensed waste broker/carrier, we work with a range of recycling plants and customers in order to find a variety of additional uses for your spent products. From fused aluminas and bauxite to garnet and glass we can collect most materials, helping your company be more cost efficient and environmentally friendly.

At Hodge Clemco we can broker the collection, recycling and disposal of most spent medias including: fused aluminas, bauxite, plastics, glass and much more.

We can arrange for material to be collected in volumes ranging from as little as one pallet to full truck loads. Our team will work with you to arrange collections. They can be from once a week, once a month or on an adhoc basis. We understand that your waste needs can change due to a variety of factors.

Every customer is unique (media purchased, equipment used etc) and the used materials are treated in the same way. We take the time to fully understand the process, the material generated and potential applications for its reuse to ensure the most cost effective solution is offered for each product collected. Using both in-house technology and third-party processing capabilities, we are able to offer tailor made recycled materials to support customers across a wide range of industry sectors.

What we need to know from you

- Company name.
- Trading address.
- Collection address.
- Contact name and telephone number.
- Material to be processed and current state.
- How is the spent material packaged?
- Who supplied the original material?
- How is the spent material currently being disposed?
- Is the spent material classed as hazardous?
- What is the European Waste Code (EWC) for the used material?
- Has the spent material had Waste Acceptance Criteria (WAC) testing?
- How much and how often will you require spent material collection?



Cabinets

Hodge Clemco offers a comprehensive range of both standard and bespoke pressure and suction hand blast cabinets. Cabinets include a light unit, and a blow-off gun in addition to the blast nozzle, vestibules can also be fitted to the doors for larger components.



Pressure Cabinets

Pressure feed hand blast cabinets are essential when removing heavy corrosion, tough coatings or when high production rates are required. Cleaning rates are up to five times the speed of a suction cabinet and are suitable for use with heavier, long life abrasives such as iron and steel. Pressure feed machines are commonly used in high production environments or on applications such as alloy wheel refurbishment and cleaning heavy castings.



Suction Cabinets

Suction Blast Cabinets provide the ideal cleaning and finishing solution to many coating and corrosion problems. Ideally suited to ensuring a decorative or aesthetically pleasing surface finish across many materials. Suction systems are generally lower in capital cost than a pressure cabinet and use less compressed air, making them an attractive proposition for smaller workshops or lower production environments. Vestibules can be fitted to the doors for larger components.



Bespoke Cabinets

Although Hodge Clemco offers an extensive range of standard equipment, bespoke equipment and cabinets often have to be engineered according to a strict specification. The entire design and manufacture process takes place at Hodge Clemco to ensure a smooth and successful implementation of a new design.



Smart Cabinets

Our entry level Smart Cab is a compact and economical unit, ideal for short intermittent periods of blast cleaning. The scope of applications include cleaning, etching, removal of coatings and polishing of small components. This unique and low cost suction cabinet is suitable for the full range of abrasives including glass bead, glass grit, plastic media and aluminium oxide. The package includes a fully assembled cabinet with a cartridge type dust collector with reverse jet cleaning.

Blast Rooms

With over 50 years experience in blast cleaning, Hodge Clemco ensures the production of a blast room which will operate to the levels required by the most demanding customer. The Ministry of Defence have placed their confidence in Hodge Clemco to produce many of their blast rooms world wide. A comprehensive consultation, design and after sales package is offered. In-house manufacturing enables the optimum blast room facility for the individual customer to be provided every time.



Containerised Design

When factory space is at a premium or a temporary site is to be utilised the containerised blast room provides an instant and economical solution. Containerised booths are based upon standard freight container sizes which reduces the design and fabrication costs that are normally associated with blast room manufacture. The flexibility of this design means that the client can specify the type of recovery system, dust collection system and size of the unit to suit their needs. Our containerised booths are fully weather proofed and can be positioned inside or outside your factory.

Hodge Clemco also manufactures a range of larger telescopic containerised booths which are designed specifically for the freight and vehicle refinishing industry.



Acoustic Booths

Where noise reduction is paramount Hodge Clemco offers a purpose designed range of equipment to meet these needs. Our acoustic booths are manufactured from composite panels filled with rock wool, steel inner and outer skins which provide excellent noise and thermal insulation properties. Our engineers fully assess site conditions to optimise the noise reduction properties of any acoustic blast room we supply.

Blast Room Equipment

Hodge Clemco's portfolio includes an extensive range of grit recovery, grit recycling and dust collection equipment. Our engineering and manufacturing expertise enables Hodge Clemco to offer tailored solutions to fit any pre-existing site conditions. Making use of clients' existing buildings can offer significant cost savings. In addition Hodge Clemco provides an upgrade service to existing plants which can help reduce down time, increase productivity and lower running costs. As part of our service we offer lighting, rubber lining and installation with our equipment to complete our overall package.

Internal Pipe Cleaning

Hodge Clemco pipe cleaning tools are designed to blast clean the interior of pipes, tubes, flues etc., removing stubborn millscale, rust, carbon, coke, paint etc. The cleaning action leaves the surface free from dust, abrasive and contaminants ready for the application of long-life coating systems. Hodge Clemco's cleaning tools are suitable for both new and existing installations with complete 360° coverage without the need to rotate pipes. Tools simply couple via blast hose to suitable blast cleaning machines, for one man operation.



Holloblast Junior -JHB 1

Cleans 19mm-51mm i.d. pipes. The smallest tool in the range. Tungsten carbide deflector tip fitted for long life. Mounts on 9.5mm IPS pipe lance. Air consumption: 80 cfm @ 100 psi (2.3m³/min @ 7 bar)



Holloblast - HB 1A

Cleans 51mm-76mm i.d. pipes. In its basic form cleans pipes up to 40ft (12.20 metres) lengths. Fast simple and highly effective for the toughest assignments. Tungsten Carbide deflector tip fitted for long life.

Air consumption:
13mm Nozzle 200 cfm @ 100 psi (5.6m³/min @ 7 bar)
16mm Nozzle 350 cfm @ 100 psi (10m³/min @ 7 bar)



Holloblast HB 1A with HBC 2 adjustable carriage

Cleans 127mm - 305mm i.d. pipes. Basic HB 1 tool fitted with adjustable centering carriage constructed from aluminium. Lightweight, rugged and efficient in operation.

Air consumption:
350 cfm @ 100 psi (10m³/min @ 7 bar)

Spinblast - SB636

Cleans 165mm-914mm i.d. pipes.

Spinblast Air consumption:
200 cfm @ 100 psi (5.6m³/min @ 7 bar) to
400 cfm @ 100 psi (11.2m³/min @ 7 bar).
(Please state nozzle size when ordering)

Holloblast HB 1A with HBC 1 centering device

Cleans 76mm-127mm i.d. pipes. Basic HB 1 tool fitted with adjustable steel collars.

Air consumption:
200 cfm @ 100 psi (5.6m³/min @ 7 bar)



SB.636 Nozzle & Air Requirement

Pipe Size	Nozzle Part Numbers (Two required)	Nozzle Size in inches (mm)	Compressor Requirements
6.1/2" -10" (165 - 254 mm)	SB63613 SB63614	1 3/4" x 1/4" orifice (44 x 6) 1 3/4" x 5/16" orifice (44 x 8)	250cfm (7m³/min) 250cfm (10m³/min)
10 - 24" (254 - 609 mm)	SB63615 SB63616	3" x 5/16" orifice (76 x 8) 1 3/4" x 3/8" orifice (44 x 9.5)	350cfm (10m³/min) 600cfm (17m³/min)
24" - 36" (610 - 914 mm)	SB63617	4" x 3/8" orifice (100 x 9.5)	600cfm (17m³/min)

Paint Spray Equipment

HD63

Pump ratio 63:1
Delivery at 60 cycles 9.50 litre
Max. Free flow DIN 24374 39.00 litre
Air inlet pressure range 35 to 75 psi (2.5 to 5 bar)
Max. Outlet fluid pressure 5020 psi (346 bar)
Recommended max tip size 0.059"

A high pressure unit designed for the application of the most demanding heavy duty industrial, marine and offshore coatings such as Coal Tar Epoxy, Glass Flake etc. Also available as a 45:1 ratio unit.



Graco King K70FH1

High-quality, volume and pressure. The Graco King pneumatic airless sprayers are powerful machines for protective coatings.

The Graco King units are designed to withstand the harshest environmental conditions and easily handle the toughest protective coatings and corrosion control applications. With 10 different ratios available, there is a sprayer with the correct pressure and flow characteristics for your application.



A range of spray guns, guards and tips are available.



MPV601N air fed visor and breathing air filter.



High pressure paint hose assemblies

Training

In a world where technology and working methods are constantly evolving to meet new and demanding criteria, training can make the difference between success and failure. The finishing industry is not exempt from these changes having to meet more complex and rigorously laid down specifications, critical inspection and compliance with Health & Safety regulations.

Hodge Clemco offers you the chance to meet these demands with confidence, providing you with the knowledge to achieve the very best from your equipment and financial constraints.

Standard courses offered include:

- Abrasive Blasting - Site operations
- Abrasive Blasting - Blastroom installations
- Abrasive Blasting - Cabinet operations
- Plastic Media Dry Stripping
- Equipment specific specialist modules - i.e. blasting helmet and breathing air monitoring

Our training courses are available in-house or at our customer premises and are suitable for novice and experienced people alike. For details on the above please call 0114 254 8811 or contact us by email at training@hodgeclemco.co.uk.

Servicing

Our after-market team consists of a dedicated Service Manager, a Service Administrators and a team of full time service engineers. The service team has many years of experience within the surface finishing industry and are able to carry out planned and reactive preventive maintenance in line with our TOTAL Care service packages.

The team can also assist you with future plant refurbishments and upgrades on our own and other manufacturers' equipment, and offers an unrivalled level of support.

For further assistance please contact one of our service team on 0114 254 1520 or email us at totalcare@hodgeclemco.co.uk

Hodge Clemco offers a range of maintenance packages designed around our customers' needs. Your choice will depend on the level of cover required to ensure your equipment meets your production targets, and the effect that any machine downtime may have within your business.

Whether it is just a one off inspection visit or a tailored gold service package, TOTAL Care has the maintenance solution for you.



Brochures

At Hodge Clemco we also have a wide range of information and brochures on our website.

You can find them by visiting the Resource Hub section and selecting brochures.



Mailing List

To keep up to date with all our latest news and special offers sign up to our mailing list. We generally send out a couple of emails a month. So we won't bother you too often. It is a good way to keep up to date with what we are doing here at Hodge Clemco.

Social Media

At Hodge Clemco we have a good presence on social media. You can follow us on any of our social media channels by searching for Hodge Clemco. We post regularly across our social media channels. It is a great way to interact with us and see our day to day work.

Find us on social media



Website and Blog

You can find out further information about Hodge Clemco on our website.

The website is the one stop place for everything about us. You can find our products, spares, advice and any special offers.

For the latest news make sure to read our blog and if you would like to be featured please contact our marketing team.

marketing@hodgeclemco.co.uk.

SurfacePrep

Hodge Clemco is part of the Surface Prep group of companies. Surface Prep are based in the USA and also have locations in Canada and the UK. They have 4 locations in the UK, Sheffield, Manchester, Washington and Tipton.

SurfacePrep are an international network of distributors of high-quality abrasive products, specialty ceramics and surface finishing equipment.

We Deliver Results Beyond The Surface
We Deliver Results Beyond The Surface
We Deliver Results Beyond The Surface
We Deliver Results Beyond The Surface



Blast Rooms
Blast Cabinets
IBIX Blast Machines
EnviraSponge Systems
Spares
PPE
Bespoke Equipment
Recyclable Abrasives
Expenable Abrasives
Paint Spray Equipment
Servicing
Training



Head Office
Hodge Clemco Ltd
36 Orgreave Drive
Sheffield
South Yorkshire
S13 9NR

Main 0114 254 0600
Sales 0114 254 8811
Service 0114 254 1520
Training 0114 254 1520

sales@hodgeclemco.co.uk
totalcare@hodgeclemco.co.uk
training@hodgeclemco.co.uk

